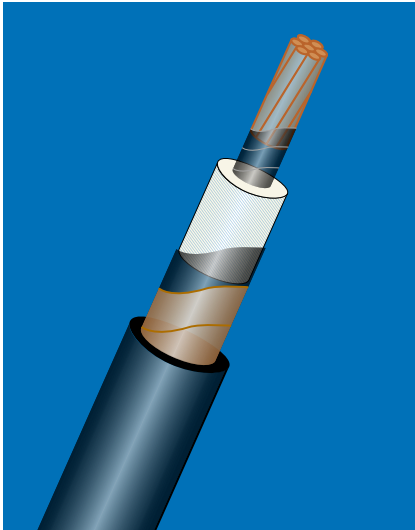


# FAA L-824 C

## Primary circuit cable

5 kV



Max core temperature: 90°C

### Applications

Airfield Lighting Equipment  
Primary cable for the serie circuit connecting the Constant Current Regulators and the isolating transformers, and between the isolating transformers. This cable can be buried providing there is an extra mechanical protection.

### Design

#### 1. Conductor

Stranded bare or tinned copper, Class 2  
Cross section: 6 mm<sup>2</sup> or 8 AWG

#### 2. Semi-conductor

Extruded

#### 3. Insulation

XLPE  
(cross linked polyethylene)

#### 4. Semi-conductor

Tape or extruded

#### 5. Screen

Copper or brass tape(s)

#### 6. Outer Sheath

PE, PVC, XLPE  
(polyethylene) (polyvinyl chloride) (cross linked polyethylene)  
Colour: black, others colours on request

### Marking

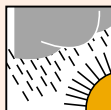
Sample: NEXANS - FAA L-824 C 1 x 6 mm<sup>2</sup> - 5 kV - year + Metric Marking

### Standards

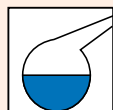
According to FAA L-824 Type C



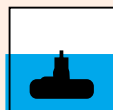
Good



Good



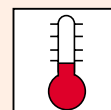
Good



Intermittent



Rigid



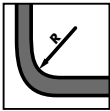
-20 / +70 °C



Good

## FAA L-824 C

Section (mm <sup>2</sup> )	Insulation thickness nominal (mm)	Screen	Tape thickness (mm)	Outer sheath	Outer diameter nominal (mm)	Weight (kg/km)
1 x 6	2.3	Brass Tape	0.08	XLPE	11.0	156
1 x 6	2.3	Brass Tape	0.08	PVC	11.0	170
1 x 6	2.3	Brass Tape	0.08	PE	11.0	156
1 x 6	2.3	Copper Tape	0.10	XLPE	11.0	164
1 x 6	2.3	Copper Tape	0.10	PVC	11.0	180
1 x 6	2.3	Copper Tape	0.10	PE	11.0	164
1 x 8 AWG	2.3	Brass Tape	0.08	XLPE	11.5	180
1 x 8 AWG	2.3	Brass Tape	0.08	PVC	11.5	211
1 x 8 AWG	2.3	Brass Tape	0.08	PE	11.5	180
1 x 8 AWG	2.3	Copper Tape	0.10	XLPE	11.5	187
1 x 8 AWG	2.3	Copper Tape	0.10	PVC	11.5	218
1 x 8 AWG	2.3	Copper Tape	0.10	PE	11.5	187



Bending radius: Static in use 10 D  
Dynamic in use 20 D